

DOOR SPECIFICATION

- custom manufacturing
- rigid aluminum frame
- leaf thickness 65 mm
- leaf made of 2 steel sheets 0.9 mm thick
- internal frame made of 1.8 mm thick steel profiles
- rockwool infill density 140 kg/m³, leaf weight = 42 kg/m²
- multipoint lock Siegenia KFV AS 2750 class 4 according to EN 15685
- possible use of panic lock Siegenia KFV AS 3600
- powder coating, RAL palette
- available in versions with insulated and single glazing with maximum dimensions of 480 mm x 880 mm

STANDARD EQUIPMENT

- 2 pcs of stainless steel 3D hinges
- 6 pcs of safety pins
- set of stainless steel handles on a long plate - Eco Schulte D-310
- cylinder insert of protection class 6/C according to EN 1303
- perimeter rubber gasket, fire resistant intumescent seal in door frame
- two dropping gaskets
- reinforcement for door closer
- alternative equipment and other door features on request

CORNER FRAME

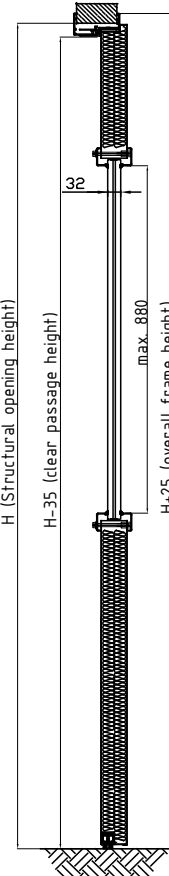
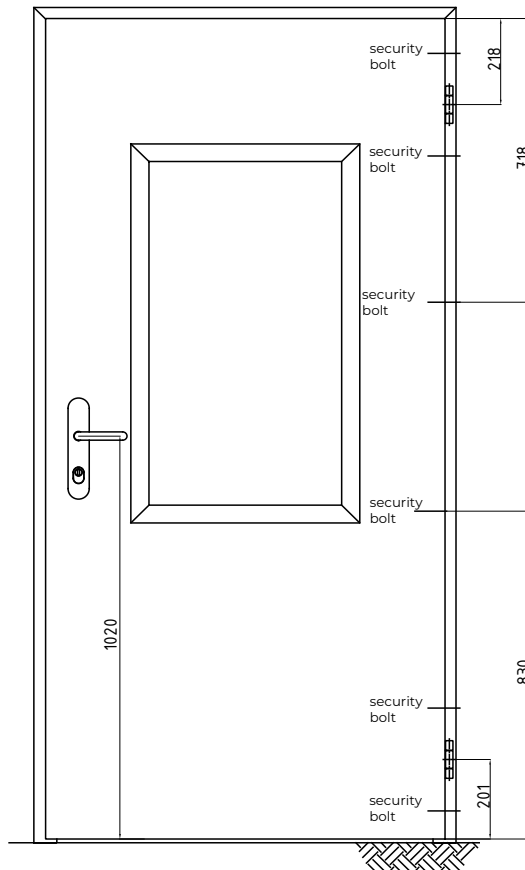
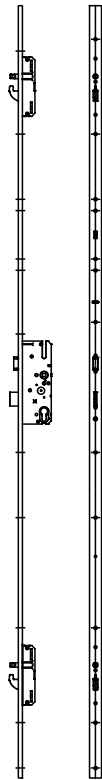
	EI1 30	EI2 60
	internal and external door	
S (width)	1232 mm	1232 mm
H (height)	2574 mm	2574 mm

TECHNICAL PARAMETERS

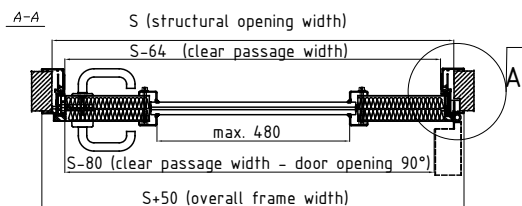
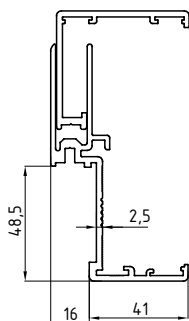
- Fire resistance EI1 30 / EI2 60
- Smoke control S₃ , S₂₀₀
- Burglary-resistance RC 3 (both sides)
- Mechanical resistance class 3 acc. to EN1192
- Acoustic insulation 37dB* (doors without glazing)
- Mechanical durability class 5
- Corrosion class C3 (optional C5)

DRAWINGS

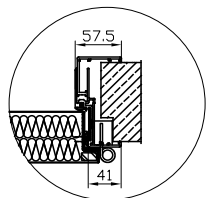
LOCK



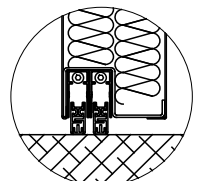
FRAME



DETAIL A
- hinge 3D



DETAIL B
- dropping gaskets



DOOR SPECIFICATION

- custom manufacturing
- rigid aluminum frame
- leaf thickness 65 mm
- leaf made of 2 steel sheets 0.9 mm thick
- internal frame made of 1.8 mm thick steel profiles
- rockwool infill density 140 kg/m³, leaf weight = 42 kg/m²
- multipoint lock Siegenia KFV AS 2750 class 4 according to EN 15685
- possible use of panic lock Siegenia KFV AS 3600
- powder coating, RAL palette
- available in versions with insulated and single glazing with maximum dimensions of 480 mm x 880 mm

STANDARD EQUIPMENT

- 2 pcs of stainless steel 3D hinges
- 6 pcs of safety pins
- set of stainless steel handles on a long plate - Eco Schulte D-310
- cylinder insert of protection class 6/C according to EN 1303
- perimeter rubber gasket, fire resistant intumescent seal in door frame
- two dropping gaskets
- reinforcement for door closer
- alternative equipment and other door features on request

WRAP-AROUND FRAME

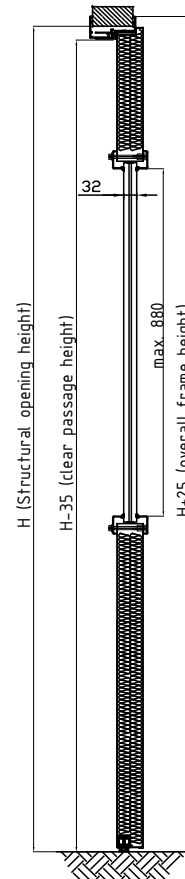
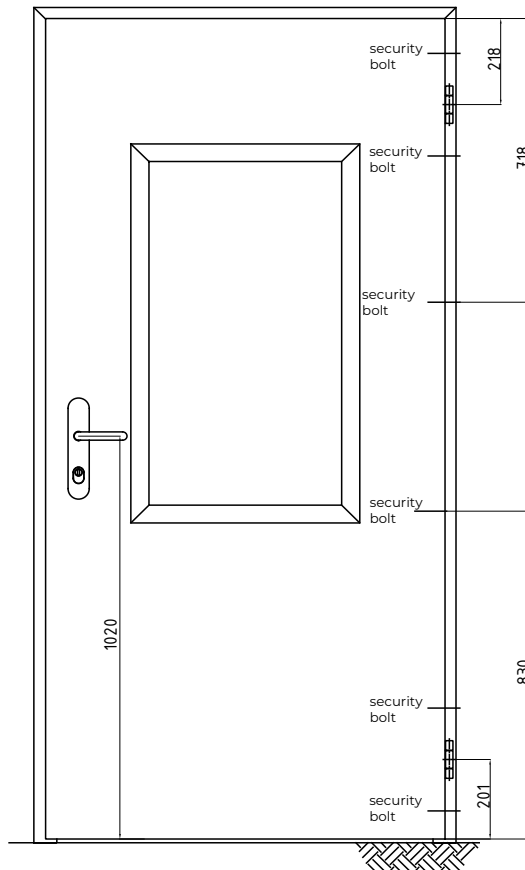
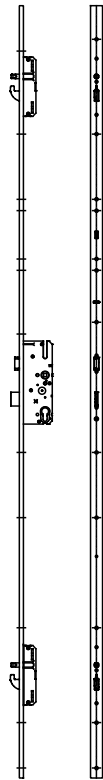
	EI1 30	EI2 60
	internal and external door	
S (width)	1232 mm	1232 mm
H (height)	2574 mm	2574 mm

TECHNICAL PARAMETERS

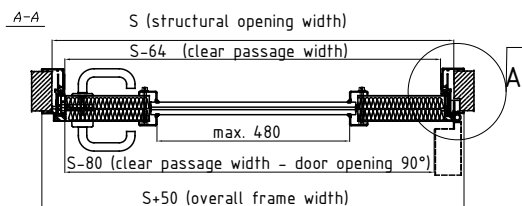
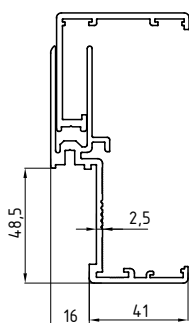
- Fire resistance EI1 30 / EI2 60
- Smoke control S_a , S₂₀₀
- Burglary-resistance RC 3 (both sides)
- Mechanical resistance class 3 acc. to EN1192
- Acoustic insulation 37dB* (doors without glazing)
- Mechanical durability class 5
- Corrosion class C3 (optional C5)

DRAWINGS

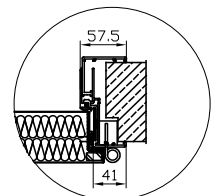
LOCK



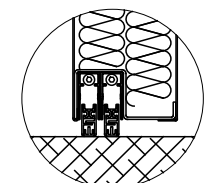
FRAME



DETAIL A
- hinge 3D



DETAIL B
- dropping gaskets



DOOR SPECIFICATION

- custom manufacturing
- rigid aluminum frame
- leaf thickness 65 mm
- leaf made of 2 steel sheets 0.9 mm thick
- internal frame made of 1.8 mm thick steel profiles
- rockwool infill density 140 kg/m³, leaf weight = 42 kg/m²
- multipoint lock Siegenia KFV AS 2750 class 4 according to EN 15685
- possible use of panic lock Siegenia KFV AS 3600
- powder coating, RAL palette
- available in versions with insulated and single glazing with maximum dimensions of 480 mm x 880 mm

STANDARD EQUIPMENT

- 2 pcs of stainless steel 3D hinges
- 6 pcs of safety pins
- set of stainless steel handles on a long plate - Eco Schulte D-310
- cylinder insert of protection class 6/C according to EN 1303
- perimeter rubber gasket, fire resistant intumescent seal in door frame
- two dropping gaskets
- reinforcement for door closer
- alternative equipment and other door features on request

RECTANGULAR FRAME

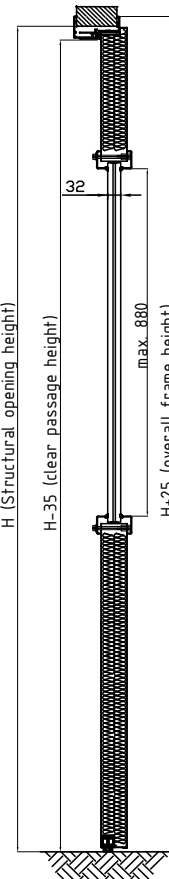
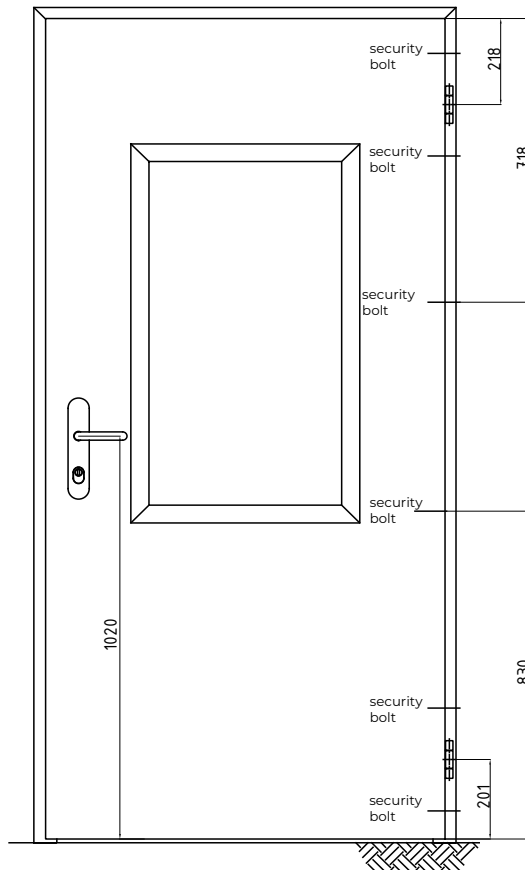
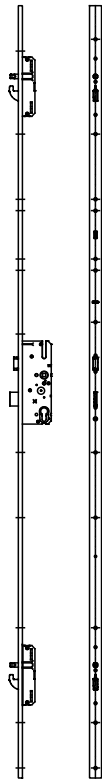
	EI1 30	EI2 60
	internal and external door	
S (width)	1302 mm	1302 mm
H (height)	2614 mm	2614 mm

TECHNICAL PARAMETERS

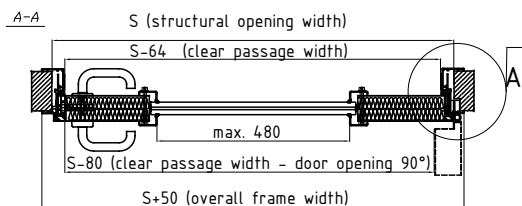
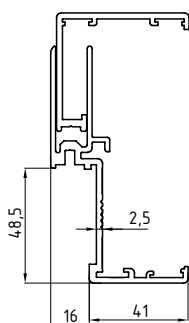
- Fire resistance EI1 30 / EI2 60
- Smoke control S₃ , S₂₀₀
- Burglary-resistance RC 3 (both sides)
- Mechanical resistance class 3 acc. to EN1192
- Acoustic insulation 37dB* (doors without glazing)
- Mechanical durability class 5
- Corrosion class C3 (optional C5)

DRAWINGS

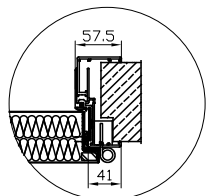
LOCK



FRAME



DETAIL A
- hinge 3D



DETAIL B
- dropping gaskets

